

Cytonemes extend their reach

Thomas B Kornberg

Cardiovascular Research Institute, University of California, San Francisco, CA, USA. Correspondence to: tkornberg@biochem.ucsf.edu

The EMBO Journal advance online publication, 14 May 2013; doi:10.1038/emboj.2013.115

Cytonemes are specialized filopodia, first described in the *Drosophila* wing imaginal disc, that were proposed to mediate long distance signalling during development. A recent report from Barna and colleagues (Sanders *et al*, 2013) published in *Nature* shows that cytonemes in the chick limb bud carry SHH signalling proteins out to signal receiving cells, thus highlighting their evolutionarily conserved roles in cell–cell communication.

Our textbooks inform us that long distance signalling by animal cells is carried out in either of two ways. One, specific for neurons, involves signal exchange at sites of direct contact. The cell body of a neuron can be far from target cells (even metres away), but neurons extend processes that can bridge the distance to the target cell. Non-neuronal cells, in contrast, are hemmed in by their neighbours, their contacts limited to nearest neighbours, and they use the other mode: signal release at the surface of signal-producing cells, followed by dispersion in extracellular fluid so that released signals eventually bind to receptors on target cells.

This clean dichotomy of form and function that has long been thought to distinguish neurons from all other cells appears no longer valid. Several lines of evidence now show that non-neuronal cells also extend asymmetric processes—filopodia—that mediate long-range signalling. Filopodia are rod-like projections that extend from the periphery of many type of cells (for review, see Faix *et al*, 2009). They contain bundles of actin filaments, are highly dynamic and flexible, and can appear to surf over the surface of cells. They are present at nerve growth cones, where they project towards sources of chemotactic signals and are presumed to have a sensory, pathfinding function. Some tumour cells have such processes (a.k.a. invadopodia), which may be involved in ECM degradation and intravasation during metastasis. They are present in cells at the leading edge of epithelial sheets, in fibroblasts, myoblasts, glia, and dendritic cells. Although the functions of these filopodia have not been confirmed—loss-of-function studies are complicated by general effects on the cytoskeleton—the settings in which they are found suggest roles in migration, adhesion, and cell–cell recognition. Nevertheless, their presence in so many cell types informs us that neurons are not unique in making projections that reach into the surrounding milieu.

Cytonemes are filopodia that are specialized for transmitting signalling proteins between communicating cells. The idea is based on a model in which filopodia are structurally and

functionally diverse, with a subset dedicated and designed for juxtacrine signalling between distant cells. The term cytoneme was coined to highlight this specialized functionality (Ramirez-Weber and Kornberg, 1999). Filopodia with apparent sensory function had been observed previously in various contexts: thin, dynamic filopodia extend across sea urchin embryos, appearing to explore and perhaps pattern distant sheets of cells (reviewed in McClay, 1999), and anthropomorphic descriptions of neuronal growth cone

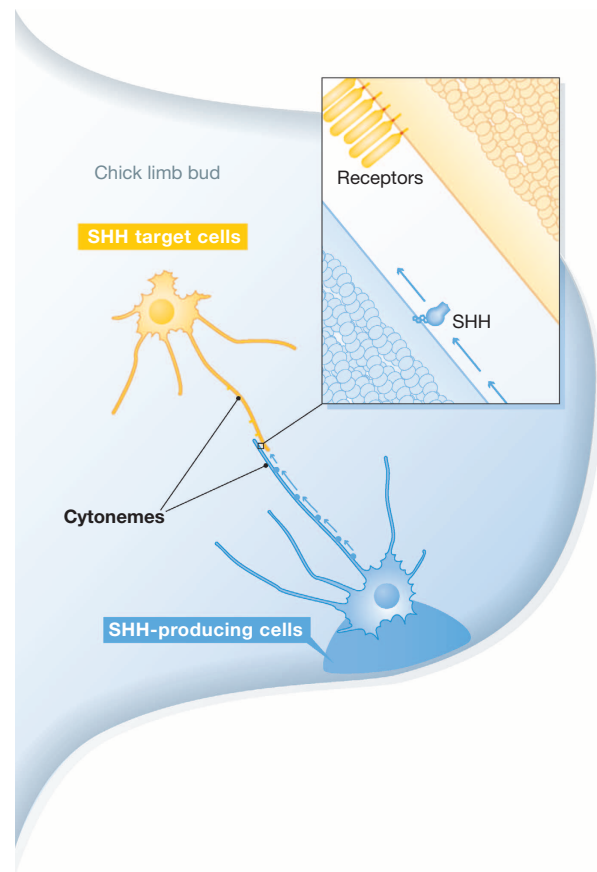


Figure 1 Cytonemes in the Hedgehog domain. Drawing depicting a spatial concentration gradient of SHH extending across the limb bud, and showing cells that span this gradient with cytonemes that either carry SHH from the distal edge (blue) or reach out with cytonemes that carry SHH receptors (yellow). Contacts between these cytonemes may mediate transport of SHH to target cells.

filopodia imply sensory roles. The discovery of filopodia associated with known signalling systems in *Drosophila* imaginal discs ties this filopodia type directly to cell-cell signalling (Hsiung *et al*, 2005; Roy *et al*, 2011).

The recent report from the Barna lab adds beautiful new data supporting the concept of contact-mediated long distance signalling by non-neuronal cells (Sanders *et al*, 2013). In the interest of full disclosure, I helped mentor Maria during much of her 5-year tenure as a Sandler Fellow at UCSF, and fondly recall that day she emerged from her microscope room with the news, 'Cytonemes!'. Our early work identified cytoneme-like filopodia in explants of chick embryos (Ramirez-Weber and Kornberg, 1999), but this new study, which applied real-time imaging to living embryos and monitored long-range transport of sonic hedgehog (SHH) proteins in the developing chick limb bud, adds strong evidence for cytoneme presence and function.

There have been several previous reports of cytoneme-associated Hh in *Drosophila*. Studies of isolated wing imaginal discs (Callejo *et al*, 2011; Biloni *et al*, 2013) showed that Hh-producing cells package Hh in puncta that distribute along cytonemes, and that Hh-containing cytonemes extend from both Hh-sending and -receiving cells. The Hh co-receptors iHog and Boi were also shown to co-localize in cytonemes. And in the female germline stem cell niche, Hh localizes in short cytonemes in the producing cells (Rojas-Rios *et al*, 2012).

The new paper from Sanders *et al* (2013) adds impressive technical virtuosity and ingenuity to extend these findings to a vertebrate embryo. These investigators developed a transposon-mediated expression system and a

custom-designed confocal microscope to image fluorescent proteins in chick embryos with unprecedented sensitivity and resolution. Focusing on the limb bud where SHH is expressed by a small group of mesenchymal cells at the posterior margin, they show that a non-cholesterol modified form of SHH is carried out from SHH-producing cells by actin-based filopodia in 200 nm particles that move at rates consistent with actin-based myosin motors, that the SHH co-receptors CDO and BOC are present in filopodia that extend from SHH-receiving cells, and that the filopodia that extend from SHH-producing and -responding cells are highly dynamic and can be as long as 150 μm , together encompassing the entire 300 μm length of the SHH signalling field (see Figure 1).

Although this work characterizes a form of SHH that is not modified with cholesterol and although the work does not show that limb bud cytonemes deliver SHH for uptake by receiving cells, it puts to rest the idea that cytonemes are limited to the surface of epithelia, incapable of navigating through a three-dimensional tissue. Therefore, the question for future research becomes not whether, but how these organelles navigate in and around organs. However, by showing that flies and vertebrates handle Hh in similar ways, this work lends credence to the idea that long distance signalling shares fundamental similarities in all animals and in all tissues and cell types.

Conflict of interest

The author declares that he has no conflict of interest.

References

- Biloni A, Sanchez-Hernandez D, Callejo A, Gradilla AC, Ibanez C, Mollica E, Carmen Rodriguez-Navas M, Simon E, Guerrero I (2013) Balancing hedgehog, a retention and release equilibrium given by Dally, Ihog, Boi and shifted/dWif. *Dev Biol* **376**: 198–212
- Callejo A, Biloni A, Mollica E, Gorfinkiel N, Andres G, Ibanez C, Torroja C, Doglio L, Sierra J, Guerrero I (2011) Dispatched mediates Hedgehog basolateral release to form the long-range morphogenetic gradient in the *Drosophila* wing disk epithelium. *Proc Natl Acad Sci USA* **108**: 12591–12598
- Faix J, Breitsprecher D, Stradal TE, Rottner K (2009) Filopodia: complex models for simple rods. *Int J Biochem Cell Biol* **41**: 1656–1664
- Hsiung F, Ramirez-Weber FA, Iwaki DD, Kornberg TB (2005) Dependence of *Drosophila* wing imaginal disc cytonemes on Decapentaplegic. *Nature* **437**: 560–563
- McClay DR (1999) The role of thin filopodia in motility and morphogenesis. *Exp Cell Res* **253**: 296–301
- Ramirez-Weber FA, Kornberg TB (1999) Cytonemes: cellular processes that project to the principal signaling center in *Drosophila* imaginal discs. *Cell* **97**: 599–607
- Rojas-Rios P, Guerrero I, Gonzalez-Reyes A (2012) Cytoneme-mediated delivery of hedgehog regulates the expression of bone morphogenetic proteins to maintain germline stem cells in *Drosophila*. *PLoS Biol* **10**: e1001298
- Roy S, Hsiung F, Kornberg TB (2011) Specificity of *Drosophila* cytonemes for distinct signaling pathways. *Science* **332**: 354–358
- Sanders TA, Llagostera E, Barna M (2013) Specialized filopodia direct long-range transport of SHH during vertebrate tissue patterning. *Nature* (advance online publication 28 April 2013; doi:10.1038/nature12157)